



**ALASKA DIVISION OF HOMELAND SECURITY &
EMERGENCY MANAGEMENT**



SITUATION REPORT 22-040 • FEBRUARY 09, 2022

Toll-Free 1.800.478.2337

Anchorage Area 907.428.7000

SEOC 907.428.7100

<p><u>SEOC Preparedness Level</u> Level 2 – Heightened Awareness</p>	<p>http://ready.alaska.gov</p>	<p><u>National Terrorism Advisory System:</u> Read the NTAS Bulletin here</p>
<p><u>Maritime Security (MARSEC)</u> Level:1-Minimum Appropriate Security Measures</p>	<p>WHO Novel Coronavirus Pandemic (COVID-19): 2019 Novel Coronavirus</p>	<p><u>Alaska Military Installation Force Protection Level:</u> FPCON Bravo</p>

(Significant changes from previous situation reports are in red.)

Significant Issues:

SEOC at Level 2 – *Heightened Awareness* – Statewide Severe Weather Impacts

The State Emergency Operations Center (SEOC) remains activated in a hybrid virtual/in-person Incident Command structure to manage the current state declared disaster responses and other incidents arising statewide. **An incident specific situation report for the 2021-2022 Winter Storms is attached to this e-mail.**

Threat Level Changes:

None

State of Alaska Department of Health and Social Services (DHSS)

DHSS is now leading the State of Alaska COVID-19 Recovery through Department Operations, supported by SEOC and other state departments as required.

For current COVID-19 information, see:

<https://covid19.alaska.gov/>

<https://www.cdc.gov/coronavirus/2019-ncov/index.html>

NTAS BULLETIN

To read current or expired advisories, click the link below:

<https://www.dhs.gov/national-terrorism-advisory-system>

Travel Alerts and Conditions

For current driving conditions dial 511 or link to <http://511.alaska.gov/>

Barry Arm Landslide / Tsunami Risk

For the latest information on the Barry Arm Landslide and Tsunami risk, click here:
[DGGG Barry Arm Landslide and Tsunami Hazard](#)

Recent Earthquakes

USGS Earthquake Information: <http://earthquake.usgs.gov/>
National Tsunami Warning Center: <http://tsunami.gov/>

Alaska Volcanoes

Davidof Alert Level: **Advisory** and Aviation Color Code: **Yellow**
Great Sitkin Alert Level: **Watch** and Aviation Color Code: **Orange**
Pavlof Alert Level: **Watch** and Aviation Color Code: **Orange**
Semisopchnoi Alert Level: **Watch** and Aviation Color Code: **Orange**
For Alaska Volcano updates, go to: <https://www.avo.alaska.edu/>

Air Quality Index (AQI) Advisories

For the most up to date Air Quality Index Advisories:
<http://dec.alaska.gov/Applications/Air/airtoolsweb/Home/Index>

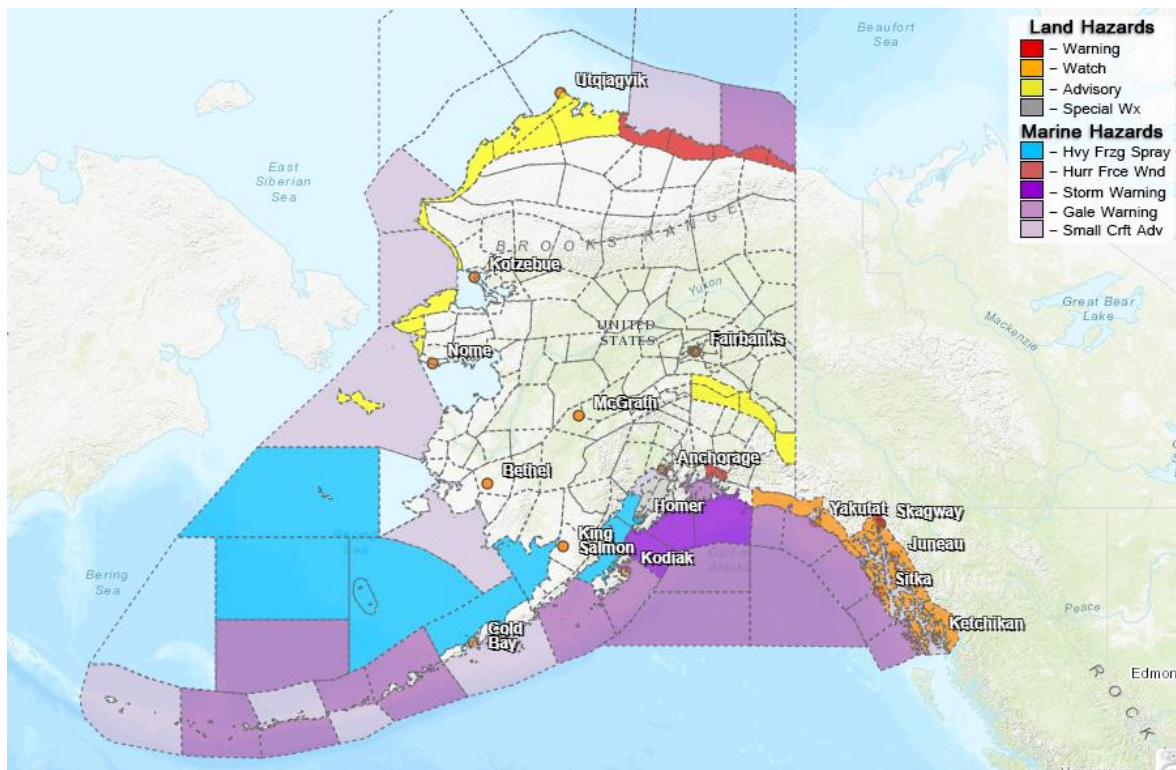
Spills of Oil and Hazardous Substances

The ADEC Spill Prevention and Response page is located at:
<http://dec.alaska.gov/spar/ppr/spill-information/response/>

Alaska Cyber Security Information

State Employees may sign up for cyber security notifications and alerts at
<https://oit.alaska.gov/security>

Significant Weather:



Wind Chill Warnings remain in effect for the following areas:

- Central and Eastern Beaufort Sea Coast – until 6:00 P.M. today. Up to -75°F

A High Wind Warning is in effect for Skagway and the Klondike Highway until 6:00 A.M. tomorrow. Winds gusting to 60 mph are expected.

Wind Chill Advisories have been issued for:

- Northern and Western Arctic Coast – until midnight tonight. Up to -59°F

Winter Weather Advisories remain in effect for the following areas:

- St. Lawrence Island, Bering Strait Coast, and the Chukchi Sea Coast – until 3:00 P.M. today. Blowing snow and cold wind chills are expected.
- Skagway and the Klondike Highway – until noon today. Up to 4 inches of snow.
- Eastern Alaska Range – until 6:00 P.M. today. 5 to 8 inches of snow.

A Flood Watch remains in effect for the entire Southeast panhandle through tomorrow morning. Flooding caused by excess rainfall and snowmelt continues to be possible across the region. Excessive runoff resulting in rises on streams along with localized urban flooding impacts are possible, especially in areas with poor drainage.

A Special Weather Statement has been issued for the Western Kenai Peninsula. Strong gusty winds and blowing snow are expected in Homer and the surrounding area today. Winds gusting to 40 mph are possible today and expected to diminish late tonight.

For more information and the most current weather, Watches / Warnings / Advisories go to: <http://www.weather.gov/arh>.

Avalanche Forecast:



There are areas near Thompson Pass and Valdez with both high and considerable risk, Cordova with moderate risk, and Haines with high risk.

Check the Avalanche Forecast Center closest to your area for the most up to date information on avalanche potential. <https://alaskasnow.org> or <https://www.weather.gov/afc/avalancheweather>

The Next Situation Report: will be 09 February 2022. A significant change in the situation or the threat level will prompt an interim report.

This report is posted on the internet at <https://ready.alaska.gov/sitrep>. To register for email distribution, go to <http://list.state.ak.us/mailman/listinfo/dhsem.situation.report>. Direct questions regarding this report to the SEOC at 907-428-7100 or seoc@alaska.gov